

Competition for customer flow has never been more intense. Understanding your customer's service experience in real-time can be the difference between losing and retaining a valuable client. Corvil Intelligence Hub offers real-time forensic visibility into all transaction flow with zero performance impact on trading infrastructure.

In a competitive trading landscape, where stakeholders need to attract and retain clients, capture more flow and maximize fill rates, the ability to obtain and rapidly action

insights into execution quality and efficiency is key to gaining a trading performance advantage.

Underpinned by Corvil's precision multi-hop instrumentation, Corvil Intelligence Hub provides visibility into transaction execution quality to correlate client trading behavior with execution path and counterparty performance. Delivering real-time visibility at a granular level from individual trades to aggregate transaction outcomes, providing sell-sides with a lens into technology stack performance and its impact on trading.



Fast Time to Value

- Plug directly into Corvil streams
- AI assisted setup for rapid configuration
- Out of the box normalization
- Out of the box dashboards



Precision Visibility

- Complete record of execution
- Passive instrumentation
- Nanosecond timestamped
- Trusted and independent



Trade Analytics

- Real-time transaction analytics
- Live order state tracking
- Multi-dimensional topological model
- Metric, event and state alerts

Plugs directly into Corvil estate with automatic configuration for a quick time to market and immediate business impact.

Transaction Performance

- Full trade traceability from issuer to market, across every hop, translation and parent/child order relationship to isolate degraded decision and transmission latencies.
- Aggregate transaction flow monitoring to allow isolation for specific clients, strategies, order types and counterparties, revealing execution path, component latency and market destinations impact trading success.

Order State Tracking

- Order state mirrored at each application and market to independently track and alert on order status.
- State alerts for overfilled & underfilled conditions, open children, exposure, unacknowledged requests, latency and more.
- Tree Order Viewer to display the order state of all parent/child slices through the application execution hierarchy along with order latency and state alerts.

Trade Analytics

- Calculate any strategy execution latency: such as client-to-market, parent to 1st child, sub-leg, path, hop.
- Calculate various trade metrics: fill rate, hit rate, reject ratio, cancel ratio, trade notional and more.
- Latency and trade metrics aggregated into multi-dimensional topologic metric cube for historical comparisons trending and anomaly detection.

Transaction Monitoring

- Transaction completeness monitoring to detect lost messages and unresponsive applications.
- Real-time reconciliation across both inter and intra-plant to detect and alert on message discrepancies.
- Real-time application outage detection and its impact on client, strategies and orders.

ML & Analytics Alerts

- Machine learning and analytic alerts, on any metric and dimension to detect problems in real-time to mitigate business impact.
- Alerts generated from neural-networks, baseline deviations, predictive analytics and thresholds; and processed by an alert engine that deduplicates, consolidates and correlates to produce actionable operational notifications.

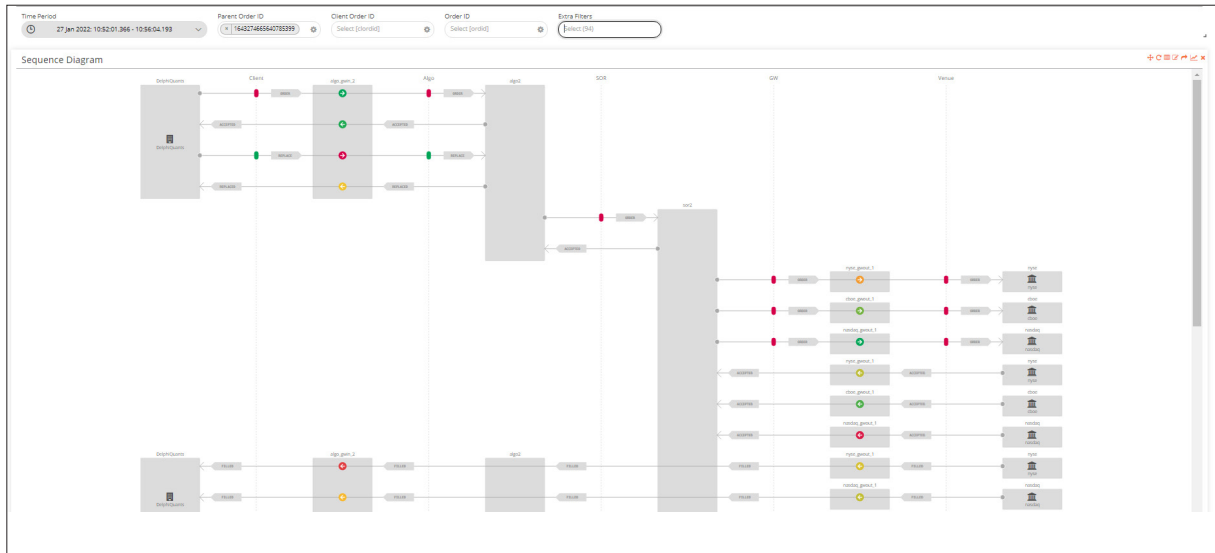
BI Dashboards & Reports

- A rich variety of business intelligence and specialized trading visualization allow stakeholders to view execution performance to be viewed in the context of the application topology.
- Brochure-quality reporting, to provide brand-aligned execution transparency to clients and internal stakeholders.

TRANSACTION PERFORMANCE

Trace individual transactions across every hop and parent/child slice. Monitor aggregate transaction performance to reveal which execution paths and applications are impacting a specific client or strategy.

- Full trade traceability, from client-to-market across every hop and parent/child order slice
- Isolate degraded decision, application and network latencies with an individual transaction
- Monitor aggregate transaction performance and isolate for specific clients and/or strategies, to review their execution path and reveal the application, component, and markets that impact trading success



TRADE ANALYTICS

Correlates key performance metrics with trading metrics for granular insights into how IT infrastructure, connectivity and counter parties impact trading outcomes.

- Calculate any latency: such as client-to-market, parent to 1st child, sub-leg, path, hop and response times
- Calculate various trade metrics: fill rate, hit rate, reject ratio, cancel ratio, trade notional and more

